

North Carolina Pooling-2014

Counties Pools Submitted from	WNV Mosq Pools Tested	WNV Pools Pos	EEE Mosq Pools Tested	EEE Pools Pos	LAC Mosq Pools Tested	LAC Pools Pos	CHIK Mosq Pools Tested	CHIK Pools Pos
Brunswick	50	0	50	1	2	0	0	0
Forsyth	167	0	164	0	145	0	80	0
Brunswick	89	0	89	0	2	0	0	0
Brunswick	82	0	82	2		0	0	0
Beaufort	26	0	26	0	2	0	0	0
Beaufort	26	0	26	0	1	0	0	0
Forsyth	90	0	65	0	62	0	0	0
Totals:	530	0	502	3	214	0	80	0

North Carolina Human Arboviral/Other Data- 2014

Disease	Cases Submitted to CDC	Total confirmed and probable events in NCEDSS created between 1/1/14 - 11/30/14*	NCEDSS Event Data			Notes
	Total Cases by year of report 2013†		Total Events Reviewed and closed by NC DPH 1/1/14 - 11/30/14	Total Events Still Under Investigation by LHD 1/1/14 - 11/30/14	Total Events created in NCEDSS 1/1/14 - 11/30/14	
EEE	1	0	1	0	1	
WEE	0	0	0	0	0	
SLE	0	0	25	3	28	
WNV	3	1/0C	44	3	47	The reported illness had an onset of illness in Fall 2013.
LAC	13	18/14C	45	8	53	
Malaria	27	36C	40	0	40	All travel outside of U.S.
Dengue	13	7/4C	11	0	11	All travel outside of U.S.
Chikungunya	1	34/24C	76	14	90	All travel outside of U.S.
				Total =	270	

December 5, 2014

Vectorborne Disease Work Group

10AM – 12PM

Agenda:

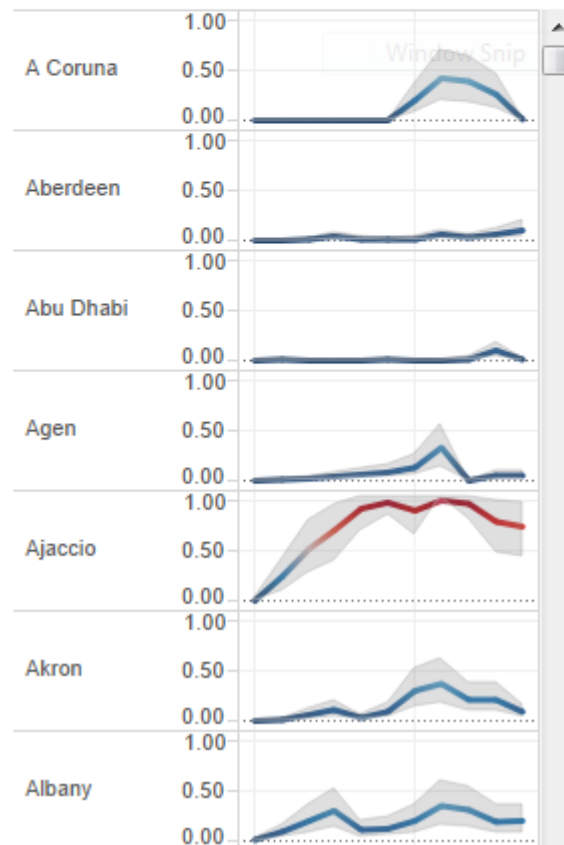
- 1000– 1010:** Please sign in
- 1010-1030:** Presentation – Dennis Salmen, NC Mosquito and Vector Control Association
“Update on Mosquito and Vector Control Conference”
- 1030- 10:50:** Arboviral data for 2014
Mosquito/Veterinary/Human
- 10:50 – 11:05** Update on Chikungunya
 - **Caribbean/Americas surveillance**
 - **Travel related cases in the continental U.S. and North Carolina**
 - **Locally acquired cases in the continental U.S./North American Continent**
- 11:05 – 11:45** Tickborne Human Surveillance Data for 2014
- 11:45-1200:** Public Comment, conclusion

NOWCAST: Chikungunya in the Americas

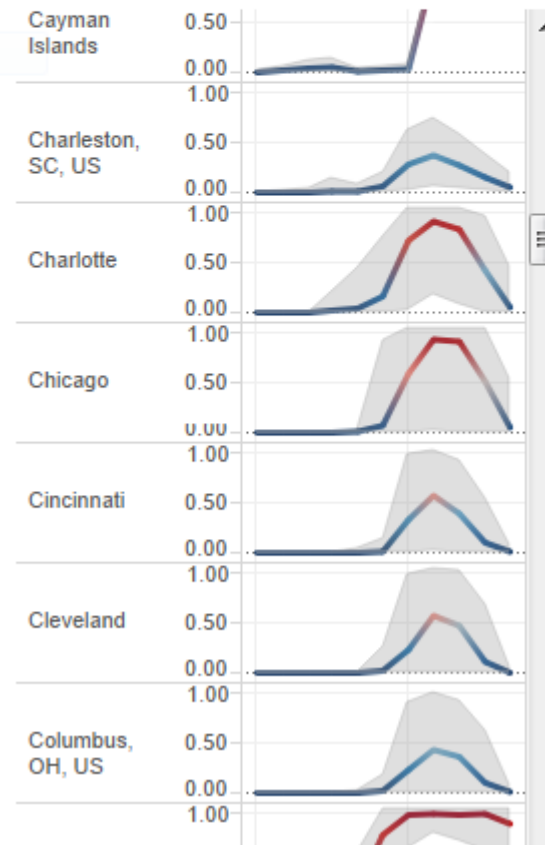


Location-specific estimates: average probability and uncertainty by month*

Infected travelers



Local transmission



Varied 2014 N.C. Events

- CHIK-V
- Hurricane

N. C. Preliminary Tickborne Disease Surveillance

January 1, 2014 - November 30, 2014

Disease	Cases Submitted to CDC	Total confirmed and probable Events in NCEDSS created between 1/1/2014 - 11/30/14*	NCEDSS Event Data		
	Total Cases/Confirmed cases by year of report 2013†		Total Events Reviewed and closed by NC DPH 1/1/14 - 11/30/14	Total Events Still Under Investigation by LHD 1/1/14 - 11/30/14	Total Events created in NCEDSS 1/1/14 -11/30/14
Lyme Disease	180/39C	146/21confirmed	767	59	826
RMSF	426/11C	463/10confirmed	1711	164	1875
Ehrlichia	78/24C	69/10confirmed	199	13	212
Anaplasma	15/1C	9/0confirmed	35	7	42
				Total =	2955

† Note: This is year of report, not year of illness onset